

# MULTI-PIECE RIM MATCHING CHART



**TIRE AND RIM SERVICING CAN BE DANGEROUS AND MUST ONLY BE PERFORMED BY TRAINED PERSONNEL USING PROPER PROCEDURES AND TOOLS.**

**FAILURE TO READ AND COMPLY WITH ALL OF THESE PROCEDURES MAY RESULT IN SERIOUS INJURY OR DEATH TO YOU AND OTHERS.**



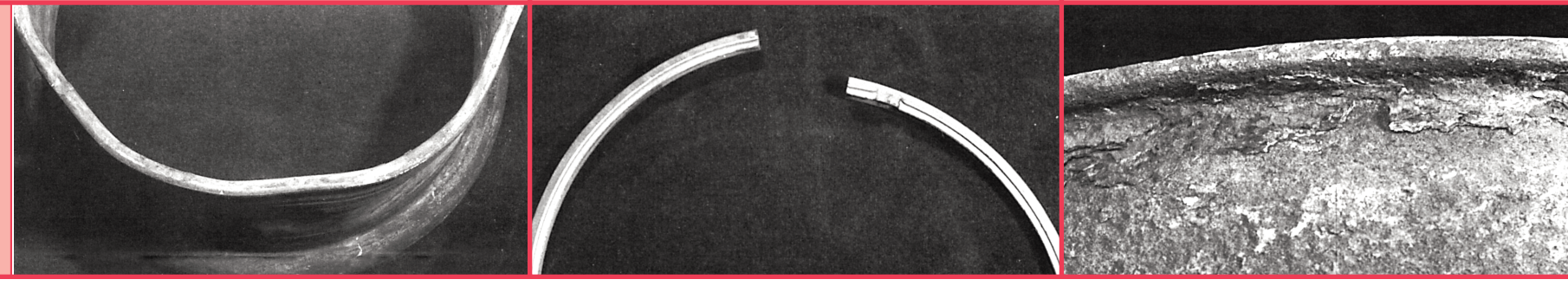
PLEASE NOTE: THIS IS CHART 3 OF A 3-CHART SET. BE SURE TO ALSO READ, UNDERSTAND AND COMPLY WITH CHARTS 1 AND 2 RE: DEMOUNTING AND MOUNTING PROCEDURES FOR TRUCK AND BUS TIRES (TUBELESS/TUBE-TYPE)

## DISCONTINUED PARTS

RIM REPLACEMENT PARTS THAT ARE OBSOLETE, DISCONTINUED OR NO LONGER IN PRODUCTION ARE SHADED IN RED.

If you are working on a rim/wheel assembly of discontinued parts that are cracked, bent, worn, pitted by corrosion, or unserviceable in any way, for whatever reason — **STOP!** You must discard all damaged components.

## EXAMPLES OF UNSERVICEABLE PARTS



## RIM PARTS NOT SHOWN IN CHART

**THIS CHART IS NOT ALL-INCLUSIVE.** Rim parts marked with **EXACTLY** the same size and type identification stamps may be used together even though they are not shown on this chart. Rim parts marked with different size and type identification stamps should **NEVER** be used together. Just because components come in together, does not mean they are matched. See WARNINGS.

⚠️ WARNING	⚠️ WARNING	⚠️ WARNING	⚠️ WARNING	⚠️ WARNING	⚠️ WARNING
<b>ALWAYS</b> comply with the procedures on this chart and in the wheel manufacturers' catalogs, instruction manuals or other industry and government instruction materials. Failure to do so may cause serious injury or death for you and others.	Any inflated tire mounted on a wheel contains explosive energy. The use of damaged, mismatched or improperly assembled tire and wheel components can cause the assembly to separate with explosive force. If struck by an exploding tire, wheel component, or the air blast, you or someone else may be seriously injured or killed.	Re-assembly and inflation of mismatched components on multi-piece tire and wheel assemblies can result in serious injury or death. Just because the components come in together does not mean they are matched. Check identification stamps for proper matching of all rim parts before assembling a multi-piece tire and wheel.	Mismatching tire and rim diameters is dangerous. A mismatched tire and rim assembly may separate and can result in serious injury or death. This warning applies to 16" and 16.5" tire and rim assemblies as well as other sized assemblies. <b>NEVER</b> assemble a tire and rim unless you have positively identified and correctly matched the tire and rim diameter.	Completely deflate any tire by removing the valve core before removing the tire/wheel assembly from the axle if there is known or suspected damage to the tire or wheel or if the tire has been operated at 80% or less of its recommended operating pressure. Demount, inspect and match all tire and rim parts before re-inflating in a restraining device.	<b>NEVER</b> use starter fluid, ether, gasoline, or other flammable materials and/or accelerants to lubricate the beads of a tire. This practice can cause the explosive separation of the tire/wheel during servicing or during highway use, which may result in serious injury or death.

## HOW TO USE THESE TABLES

### HOW TO MATCH RIM PARTS

- Find the stamped identification on the rim base and ring(s). Refer to the pictures (see pictures bottom right) to help find the locations of the stamps. Identify the parts based on the stamps themselves—**DO NOT** identify the parts based only on the way they look.
- If you cannot find the identification stamp—**STOP!** **NEVER** use a rim part that you cannot identify from the stamp.
- Match the markings found on the rim base with those shown in the "Rim Base Identification Stamping" column in the tables below.
- Continue reading the same line across the table to find the proper markings for the matching side ring (or lock ring and flange).
- NEVER** assemble mismatched rim parts (see WARNINGS above). If the identification stamps on the parts do not match—**STOP!** Select serviceable replacement parts from stock or obtain them from a rim supplier.
- If you are working on a rim/wheel assembly of discontinued parts that are cracked, bent, worn, pitted by corrosion, or unserviceable in any way, for whatever reason—**STOP!** You must replace the entire discontinued assembly with one that is in current production. Examples of unserviceable parts are shown in the photos above.

### HOW TO READ THESE TABLES

#### Example A – Two-Piece Rim/Side Ring Assembly

- The rim base and side ring to be assembled have identification stamps like the ones shown to the right.
- Find 20 x 7.5 rim size in the "Rim Size" column in the tables below. Locate 20 x 7.5 FL in the "Rim Base Identification Stamping" column.
- Continue reading the same line across the table. Find the matching side ring markings in the "Side Ring Identification Stamping" column.
- One of the proper markings is: 20 x 7.5 FL. This matches the stamp of the side ring shown in the photo. These parts are matched and will make a proper assembly.



#### Example B – Three-Piece Rim/Side Ring Assembly

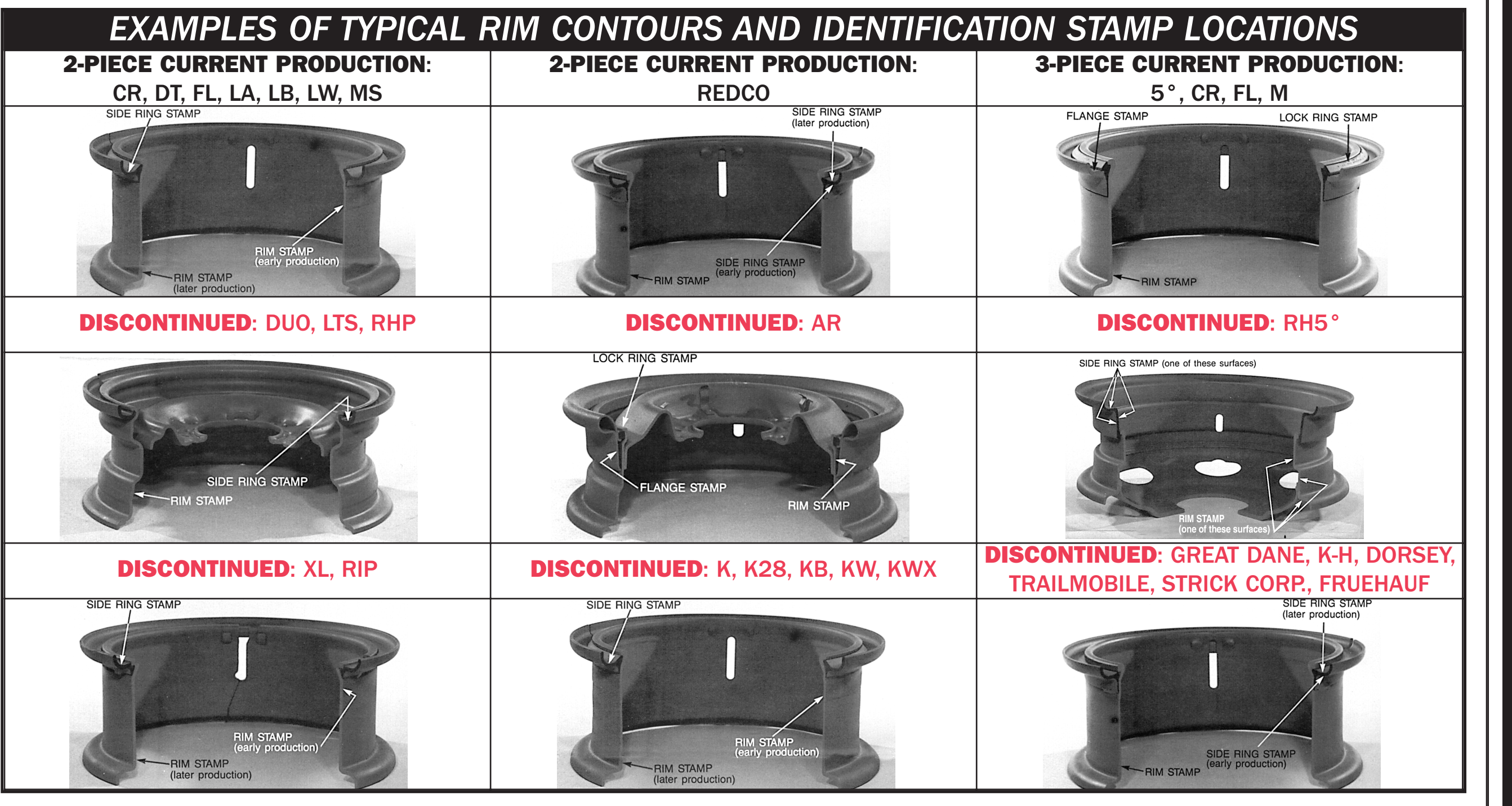
- Follow Steps 1 and 2 in Example A – Two-Piece Assembly.
- Read across the table in the same row to find the proper match in the "Lock Ring Identification Stamping" and "Flange Identification Stamping" columns.

## MULTI-PIECE RIM MATCHING TABLES CURRENT PRODUCTION

2-PIECE			3-PIECE			
RIM SIZE	RIM BASE IDENTIFICATION STAMPING	SIDE RING IDENTIFICATION STAMPING	RIM SIZE	RIM BASE IDENTIFICATION STAMPING	LOCK RING IDENTIFICATION STAMPING	FLANGE IDENTIFICATION STAMPING
15 X 6.5	15 X 6.5 LW	R15 X 6.5-7.0 LB-LW	20 X 7.5	20 X 7.5 M	LR 20 X 7.5-8.5-10.0 M	F 20 X 7.5-8.5 M
15 X 7.5	15 X 7.5 LW	R15 X 7.5-8.0 LB-LW	20 X 7.5	20 X 7.5*	20 X 7.0-7.5-8.0-5*	20 X 7.5-8.05*-7.5 FL
20 X 6.5	20 X 6.5 LW	R20 X 6.5-7.0 LB-LW	20 X 8.0	20 X 8.0*	20 X 7.0-7.5-8.0-5*	20 X 7.5-8.05*-7.5 FL
20 X 7.5	20 X 7.5 FL	R20 X 7.5 FL	20 X 8.5	20 X 8.5 M	LR 20 X 7.5-8.5-10.0 M	F 20 X 7.5-8.5 M
20 X 7.5	20 X 7.5 LW	R20 X 7.5-8.0-9.0 LB-LW	20 X 10.0	20 X 10.0 M	LR 20 X 7.5-8.5-10.0 M	F 20 X 10.0 M
20 X 8.0	20 X 8.0 LW	R20 X 7.5-8.0-9.0 LB-LW	22 X 8.0	22 X 8.0*	22 X 7.0-7.5-8.0-5*	22 X 8.0-5*
20 X 9.0	20 X 9.0 LW	R20 X 7.5-8.0-9.0 LB-LW	24 X 7.5	24 X 7.5 M	LR 24 X 7.5-8.5-10.0 M	F 24 X 7.5-8.5 M
24 X 8.0	24 X 8.0 LW	R24 X 7.5-8.0-9.0 LB-LW	24 X 8.0	24 X 8.0*	24 X 7.0-7.5-8.0-5*	24 X 8.0-5*
24 X 9.0	24 X 9.0 LW	R24 X 7.5-8.0-9.0 LB-LW	24 X 8.5	24 X 8.5 M	LR 24 X 7.5-8.5-10.0 M	F 24 X 7.5-8.5 M
			24 X 8.5	24 X 8.5*	24 X 8.5-5*	24 X 8.5-5*
			24 X 10.0	24 X 10.0 M	LR 24 X 7.5-8.5-10.0 M	F 24 X 10.0 M

## MULTI-PIECE RIM MATCHING TABLES OUT-OF-PRODUCTION (OBSOLETE)

2-PIECE			3-PIECE			
RIM SIZE	RIM BASE IDENTIFICATION STAMPING	SIDE RING IDENTIFICATION STAMPING	RIM SIZE	RIM BASE IDENTIFICATION STAMPING	LOCK RING IDENTIFICATION STAMPING	FLANGE IDENTIFICATION STAMPING
15 X 5.5	15 X 5.5 LTS; B5515 TS 15 X 5.5 LW; B5515 LW 15 X 5.5 F RHP	R15 X 5.5 LTS; R5515 TS R15 X 5.5-6.0 LB-LW; R5515 LW; R5015 L 15 X 5.0 F RHP; 15 X 4.50E-5.5 F RIP	15 X 7.0	15 X 7.0-5*	15 X 7.0-7.5-8.0-5*	15 X 7.0-5*
15 X 6.0	15 X 6.0 LTS; B6015 TS 15 X 6.0 LW; B6015 LW	R15 X 6.0 LTS; R6015 TS R15 X 5.5-6.0 LB-LW; R5515 LW	15 X 7.5	15 X 7.5-5*	15 X 7.0-7.5-8.0-5*	15 X 7.5-5*
15 X 6.5	B6515 LW	R15 X 6.5-7.0 LB-LW; R6515 LW; R6015 L	20 X 5.0	20 X 5.0	20 DIA	20 X 5
15 X 7.0	15 X 7.0 LW; B7015 LW 1715 15-7.0 1115 15-7.5	R15 X 6.5-7.0 LB-LW; R6515 LW; R6015 L 1715 RC15-7.0 1115 RC15-7.5	20 X 6.0	20 X 6.0-5*	20 X 6.0-5*	20 X 6.0-5* FL
15 X 7.5	B7515 LW B7515 LB	R15 X 7.5-8.0 LB-LW; R8015 LW R8015 LW	20 X 6.5	20 X 6.5	20 DIA	20 X 6
16 X 5.5	16 X 5.5 LTS; 16 X 5.5 F-LTS; B5516 TS 16 X 5.5 F RHP 16 X 5.5 F-DUO	R16 X 5.5 LTS; R5516 TS; 16 X 5.5 F-LTS 16 X 5.5 F RHP; 16 X 4.50E-5.5 F RIP R5516 LTS; 16X5.50F LTS; DUO 16X5.5 F	20 X 6.5	20 X 6.5-5*	BW-5 20 X 6.5-7.0 T 20 X 6.5-5*	BW-5 20 X 6.5-7.0 T 20 X 6.5-5* CR; F6520 CR
16 X 6.0	16 X 6.0 LTS; B6016 TS 16 X 6.0 G RHP	R16 X 6.0 LTS; R6016 TS 16 X 6.0 G RHP; 16 X 6.0 G RIP	20 X 7.0	20 X 7.0-5*	20 X 6.5-7.0 CR; LR6520 CR; LR20 X 6.5-7.0 CR 20 X 7.0-7.5-8.0-5*	20 X 7.0-5* FL; F7020 CR; 20 X 7.0-5* FL- BW-5 20 X 6.5-7.0 T
16 X 6.5	16 X 6.5 LTS; B6516 TS	R16 X 6.5 LTS; R6516 TS	20 X 7.5	20 X 7.5 M	LR20 X 7.5-8.5-10.0 M; LR20 M	20 X 7.5-5* FL; 20 X 7.5-8.05*-7.5 FL; F20 X 7.5 FL; F7520
20 X 5.0	B5020 LW B5020 KW B5520 LW	R5020 LW R5020 KW 20 X 5.5-6.0DT-LB-LW; R5520 LW	20 X 8.0	20 X 8.0-5*	BW-5 20 X 7.5 20 X 8.0-5*; F20800 B	B-5 20 X 7.5 20 X 8.0-5*; 20 X 7.5-8.05*-7.5 FL
20 X 5.5	20 X 5.5 F RHP B5520 KW 20 X 6.0 FL	20 X 5.5 F RHP; 20 X 5.50F RIP R5520 KW 20 X 6.0 FL	20 X 8.5	20 X 8.5 M	BW-5 20 X 7.5-8.0V-8.5V 20 X 8.5-5*	BW-5 20 X 8.0V-8.5V 20 X 8.5-5*
20 X 6.0	20 X 6.0 LB; B6020 LB; 20 X 6.0 DT-LB	R20 X 5.5-6.0 LB-LW; R5520 LW; 20 X 5.5-6.0DT-LB-LW	20 X 10.0	B1020 M	LR20 X 7.5-8.5-10.0 M; LR20 M LR20 X 7.5-8.5-10.0 M; LR20 M	F20 X 7.5-8.5 M; F7520 M F20 X 10.0 M; F1020 M
20 X 6.5	20 X 6.5 CR; B6520 CR 20 X 6.5 LB; B6520 LB; 20 X 6.5 DT-LB B6520 LW	R20 X 6.5-7.0 CR; R6520 CR; R20 X 6.5-7.0 CR R20 X 6.5-7.0 LB-LW; R6520 LW; 20 X 6.5-7.0 DT-LB-LW R20 X 6.5-7.0 LB-LW; R6520 LW; 20 X 6.5-7.0DT-LB-LW	22 X 7.5	22 X 7.5 FL; B7522 FL	22 X 7.5 FL; LR22 X 7.5 FL; LR7522 FL	22 X 7.5-5* FL; 22 X 7.5-8.05*-7.5 FL; F22 X 7.5 FL; F7522 FL; 22 X 7.5-8.05*-7.5 FL
20 X 6.5	20 X 6.5 RH5*; 20 X 6.5 -RH5*	20 X 6.5 RH5*	22 X 8.0	22 X 8.0-5*	LR22 X 7.5-8.5-10.0 M BW-5 22 X 7.5 22 X 8.0-5*; F22800 B	F7522 M 22 X 8.0-5* BW-5 22 X 8.0V-8.5V F24 X 7.5-8.5 M; F7524 M
20 X 7.0	20 X 7.0 CR; B7020 CR 1720 20-7.0; KH 20 X 7.0 20 X 7.0 LB; B7020 LB; 20 X 7.0 DT-LB 20 X 7.0 LW; B7020 LW	20 X 6.5-7.0 CR; R20 X 6.5-7.0 CR; R6520 CR R20 X 6.5-7.0 LB-LW; R6520 LW; 20 X 6.5-7.0 DT-LB-LW	24 X 7.5	24 X 7.5 M	LR24 X 7.5-8.5-10.0 M; LR24 M	24 X 7.5-5* FL; 24 X 7.5-8.05*-7.5 FL; 24 X 8.0-5*
20 X 7.5	20 X 7.5 LB; 20 X 7.5DT-LB; B7520LB; G20750B 20 X 7.5 LW; B7520 LW; G20750B	R20 X 7.5-8.0-9.0 LB-LW; 20 X 7.5-8.0 DT-LB-LW; R8020 R8020 KW R8020 KW BW-5 20 X 7.5 R8020 KW R8020 KW BW-5 22 X 7.5	24 X 8.0	24 X 8.0-5*	LR24 X 7.5-8.5-10.0 M; LR24 M	F24 X 7.5-8.5 M; F7524 M 24 X 7.5-8.05*-7.5 FL; 24 X 8.0-5*
20 X 8.0	20 X 8.0 LW; B8020 LW; G20800B B8020 KW	R20 X 7.5-8.0-9.0 LB-LW; 20 X 7.5-8.0 DT-LB-LW; R8020 R7520 K	24 X 8.5	24 X 8.5 M	LR24 X 7.5-8.5-10.0 M; LR24 M	F24 X 7.5-8.5 M; F7524 M
20 X 9.0	B9020 M	R20 X 7.5-8.0-9.0 LB-LW; R8020 LW; R7520 L	24 X 10.0	B1024 M	LR24 X 7.5-8.5-10.0 M; LR24 M	F24 X 10.0 M; F1024 M
22 X 7.5	1022 22-7.5; T/M 22-7.5 8-A3-190 1122 22-7.5; D-13522 22-7.5; A-AA2952 22-7.5 22 X 7.5 FL; B7522 FL 22 X 7.5 LB; 22 X 7.5DT-LB; B7522LB; G22750B 22 X 7.5 LW; 22 X 7.5 LW; B7522 LW; G22750B	1022 RC22-7.5; T/M 22-7.5 8-A3-190 1122 RC22-7.5; D 22-7.5D 13522-SR; F 22-7.5 A-AA2952-1 22 X 7.5 FL; R22 X 7.5 FL; R7522 FL R22 X 7.5-8.0-9.0 LB-LW; 22 X 7.5-8.0 DT-LB-LW; R8022 R22 X 7.5-8.0-9.0 LB-LW; 22 X 7.5-8.0 DT-LB-LW; R8022	22 X 10.0	22 X 10.0 M	LR22 X 7.5-8.5-10.0 M; LR22 M	F22 X 10.0 M; F1024 M
22 X 8.0	22 X 8.0 LW; 22 X 8.0 LW; B8022 LW; G22800B B8022 KW	R22 X 7.5-8.0-9.0 LB-LW; 22 X 7.5-8.0 DT-LB-LW; R8022 R7522 KW				
24 X 8.0	B8024 LW B8024 KW	R24 X 7.5-8.0-9.0 LB-LW; R8024 LW; R7524 L R7524 K				
24 X 9.0	B9024 M	R24 X 7.5-8.0-9.0 LB-LW; R8024 LW; R7524 L				
24 X 10.0	24 X 10.0 LA; B1024 LA	R24 X 10.0 LA; R1024 LA				



**NOTES:**

- Wheel numbers 86130, 86140, 86680, 86640, 87160, 87430, 87440, 87500, 87510, 87560, 87740, 88540, 88630 associated with the 16 x 5.50 F Duo rim use LTS rings. All other DUO rims use "C" section side rings (DUO 16 x 5.50 F).
- Some aluminum wheel stampings are followed by a character (X-T-N-B) which indicates a finished surface condition. This does not affect the interchangeability of the parts as shown on this table.
- "DT", "LB", "LW" and "DT-LB-LW" are interchangeable components.
- This product is still being manufactured for use with other components.

**THIS CHART MUST BE PRINTED AT LEAST 2' x 3' MINIMUM SIZE.**

**OSHA** Occupational Safety and Health Administration  
U.S. Department of Labor  
www.osha.gov • (800) 321-OSHA (6742) • TTY (877) 889-5627