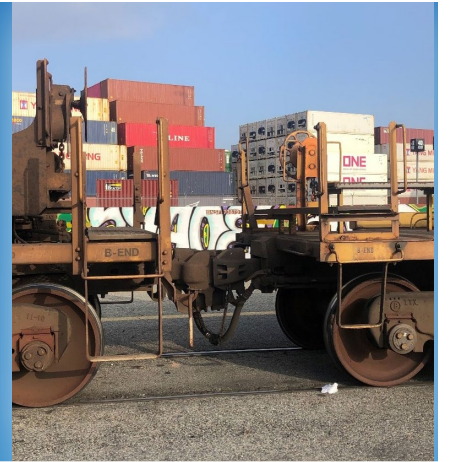




Five Ways to Stay Safe When Working with Rail Cars in Marine Terminals

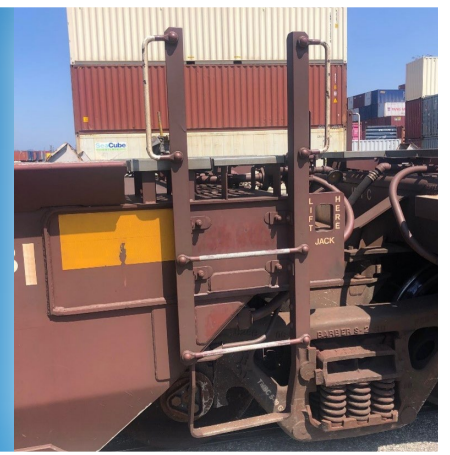
1

Avoid walking on, under or through rail cars, or between cars less than 10 feet apart on the same track when transiting the terminal.



2

Only use ladders, steps, or other parts of rail cars that are intended to be foot or hand holds when accessing cars.



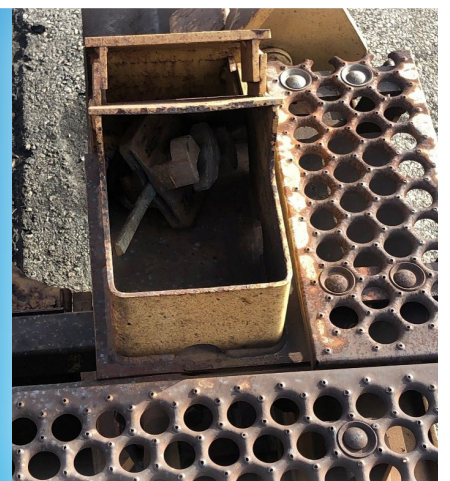
3

Check the condition of gratings and use caution when walking and working on rail car platforms. Work practices should also be in place to prevent falls from equipment.



4

Stow twist locks, cones, or inter-box connectors when not in use.



5

Where cars are being worked, make tracks inaccessible to other equipment and use flags, lights, or signs to clearly mark their closure.



Remember: Notify your supervisor of any damaged equipment or unsafe conditions.